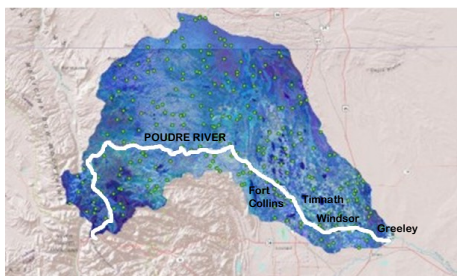


“Let’s make the Poudre River the world’s best example of a healthy, working river.”

That’s the vision of a diverse group of regional leaders and experts brought together and facilitated by CSU’s Colorado Water Institute. Folks from agriculture, business, environmental groups, urban water management, recreation, and industry have met since 2012. They share their experience and knowledge about the Poudre’s uses to meet our human needs for food, beer, bathing and landscapes, and also the river’s ecological needs. And they use what they learn to identify opportunities for cooperative action.

Cache La Poudre Watershed



Regional leaders and experts from agriculture, business, environmental groups, urban water management, recreation, and industry

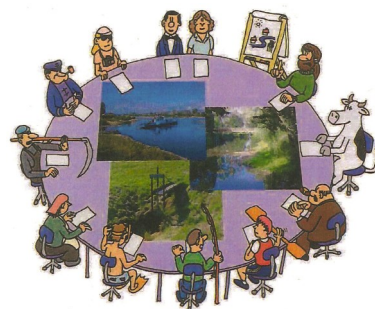
The Poudre Runs Through It Study/Action Work Group reflects the same diversity of values held by those who live in the communities along its banks. Some value the river mainly as a working river--for agricultural, municipal and industrial needs. Others value its rich recreation opportunities and ecological attributes. But we all want a river that meets our human needs AND is a healthy river in its own right. We have built strong, enduring relationships that have enabled us to launch some key initiatives that meet both working river and healthy river objectives.

Improve Poudre Flows while Respecting Water Rights

At the end of its first year, the Poudre Runs Through It brainstormed a number of action initiatives to help meet its working river/healthy river goals. One of the first adopted is this one -- trying to figure out how those who divert from the Poudre, including agricultural irrigation companies and domestic water utilities, could work with the ecologists in our group to see if we could increase flows at critical times and places along the river without in any way harming private property rights. Success in water matters does not come overnight, but the group has made steady progress. They are pursuing a novel augmentation plan approach -- one the Colorado Department of Natural Resources and the Colorado Water Trust -- two groups cooperating on the project -- had never thought of!

Ag/Urban Water Sharing

A new initiative being launched will carry on work started by a group of irrigation companies and domestic water providers who divert from the Poudre to consider ways agricultural water and land can be preserved in view of future urban water needs.



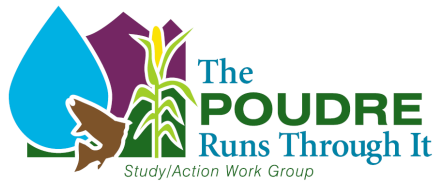
Poudre River Forum

Our annual celebration of the river convenes the wide diversity of those who care about the river to learn more about it and to collaborate on how we can meet the dual goals of working river/healthy river. Features presentations and panels, dialogue, interactive booths. Topics like “If We’re Going to Grow, How Can We Grow in a Water Smart Way?”; “River Health: Themes Across a Landscape”; and “Where Does Poudre Water Come From and Where Does It Go?”

Other Collaborative Actions

- **Gage the River signs** to show folks boating, biking or hiking the river how its flows vary from place to place and season to season.
- **Diversion improvements** helping irrigation companies whose diversions were damaged by the 2013 flooding to rebuild them in a more ecologically friendly way
- **Poudre World Café** in conjunction with CSU’s Center for Collaborative Conservation, an opportunity for members of the Poudre’s communities to dialogue about their values in relation to the Poudre
- **“The Cache la Poudre River - Our River Basin Community”** in cooperation with Poudre Heritage Alliance, an animated history of the Poudre River for children and adults.

Mark your calendar for the next Forum Friday, February 5, 2016, at The Ranch.



Steering Committee

John Bartholow | Jeffrey Boring | Dan Brown
John Stokes | Dale Trowbridge

Participants

Diana Aungst | Tim Brown | Ray Caraway | Jason Dennison
April Getchius | Scott Hummer | Jennifer Kovecses
Ken Kehmeier | Mark Koleber | Steve Malers | Brad Modesitt | Richard Raines
Eric Reckentine | Jim Reidhead | Matt Robenalt | Troy Seaworth | Mark Simpson | Susan Smolnik
Bob Streefer | Zach Thode | Robert Ward | Wade Willis | Brad Wind

Conveners/Facilitators

Reagan Waskom | MaryLou Smith | Jay Merrill

Previous Work Group Participants

Brian Bledsoe | John Bustos Jr. | Sean Cronin | Wynne Odell | Doug Robotham
John Sanderson | Bill Sears | Rich Shannon | Steve Smith | George Varra

Participants are chosen for their expertise related to the Poudre River, including those from the agricultural, environmental, municipal, industrial, recreational, business, development, and other sectors. Another factor in the selection of participants is the intent to include individuals associated with a wide diversity of organizations with interests in the Poudre River.

Organizations with which Poudre Runs Through It Members are Affiliated

American Canoe Assoc. | American River Assoc. | American Water Resources Assoc.
Big Thompson Watershed Forum | Cache La Poudre Reservoir Co.
Cache La Poudre Water Users Assoc. | City of Ft. Collins | City of Greeley | City of Thornton
Coalition for the Poudre Watershed | Colorado Ag Water Alliance
Colorado Coalition of Land Trusts | Colorado Conservation Exchange | Colorado Cattlemen's Assoc.
Colorado Dry Bean Assoc. | Colorado Foundation for Water Education
Colorado Open Space Alliance | Colorado Water Congress | Colorado Water Innovation Cluster
Community Foundation of Northern Colorado | Ditch and Reservoir Companies Alliance | Ducks Unlimited
East Larimer County Water District | Embrace Northern Colorado | Family Farm Alliance
Four States Irrigation Council | Ft. Collins Conservation District
Ft. Collins Downtown Development Authority | Ft. Collins Downtown Business Assoc. | Ft. Collins Housing Authority
Ft. Collins-Loveland Water District | Ft. Collins Natural Resources Advisory Board
Ft. Collins Water Board | Halligan/Seaman Water Mgt. Project | Larimer County Agricultural Advisory Board
Larimer County Farm Services Admin. | Larimer County Stock Growers Assoc.
Legacy Land Trust | Lower Poudre Augmentation Co. | Lower Poudre Canyon Assoc.
Metro Roundtable | National Audubon Society | New Cache La Poudre Irrigating Co. | North Poudre Irrigation Co.
North Front Range MPO | Northern Water | North Weld County Water District | Open Water Foundation
Pheasants Forever | Poudre Heritage Alliance | Poudre River Trail Corridor Inc. | Poudre River Trust
Rocky Mountain Bird Observatory | Rocky Mountain Flycasters | Save the Poudre
South Platte Basin Roundtable | The Nature Conservancy | Town of Timnath | Town of Windsor
Trout Unlimited | UniverCity Connections | Water Supply & Storage Co. | Weld County
Weld County Underground Water Users Assoc.

For more information see our website -
<http://www.cwi.colostate.edu/thepoudrerunsthroughit>
or contact MaryLou.Smith@colostate.edu
(970) 491-5899